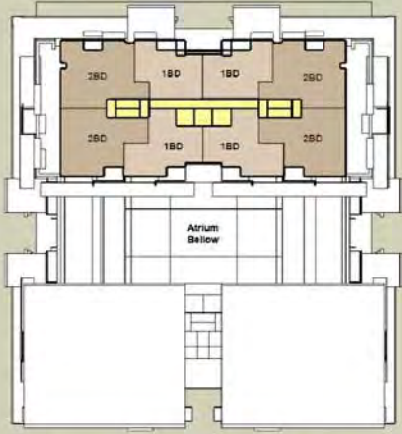




skywater

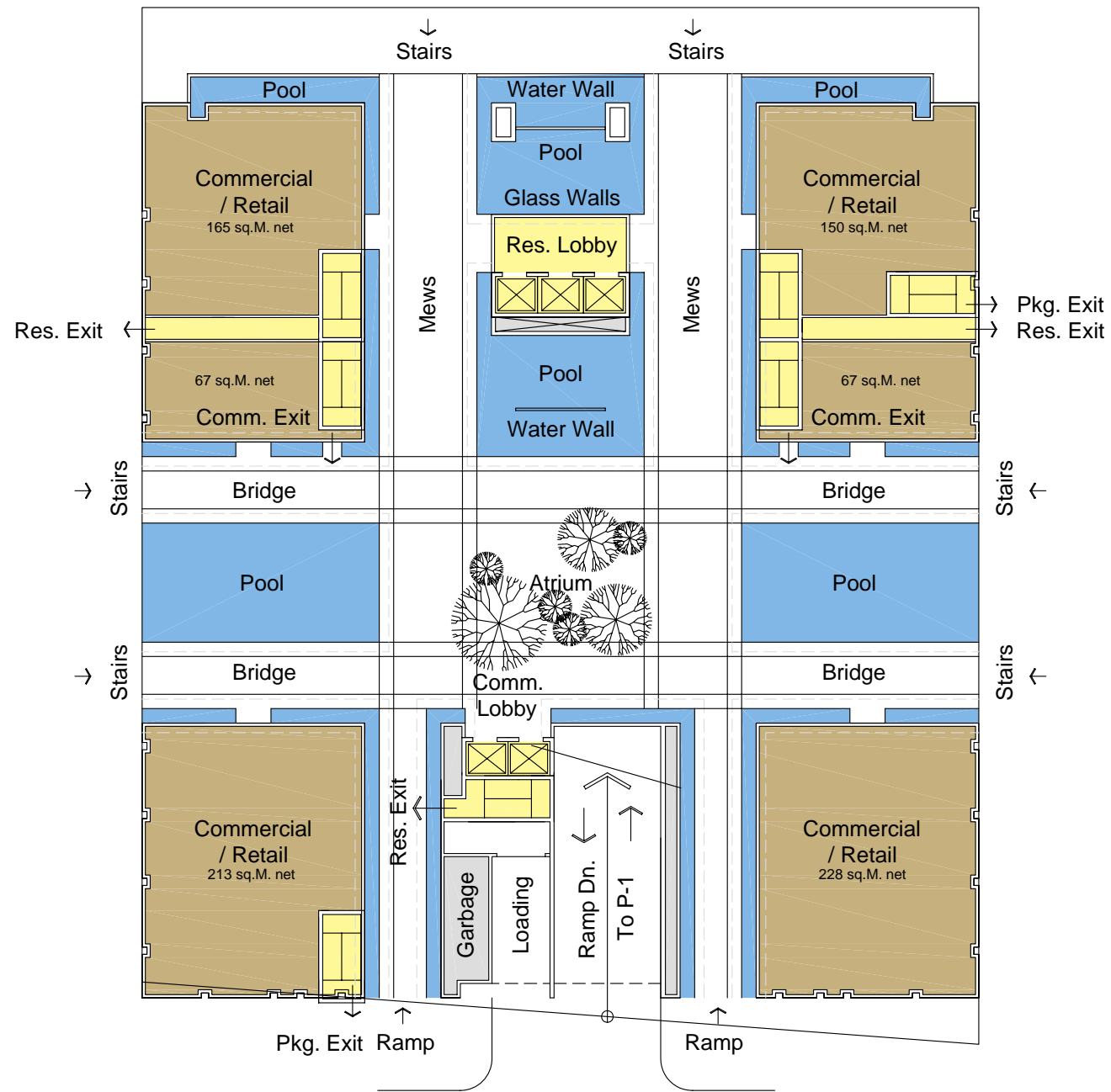


Residential Tower Floor Plan



Commercial Podium Floor Plan

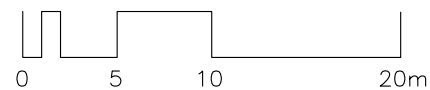
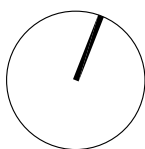




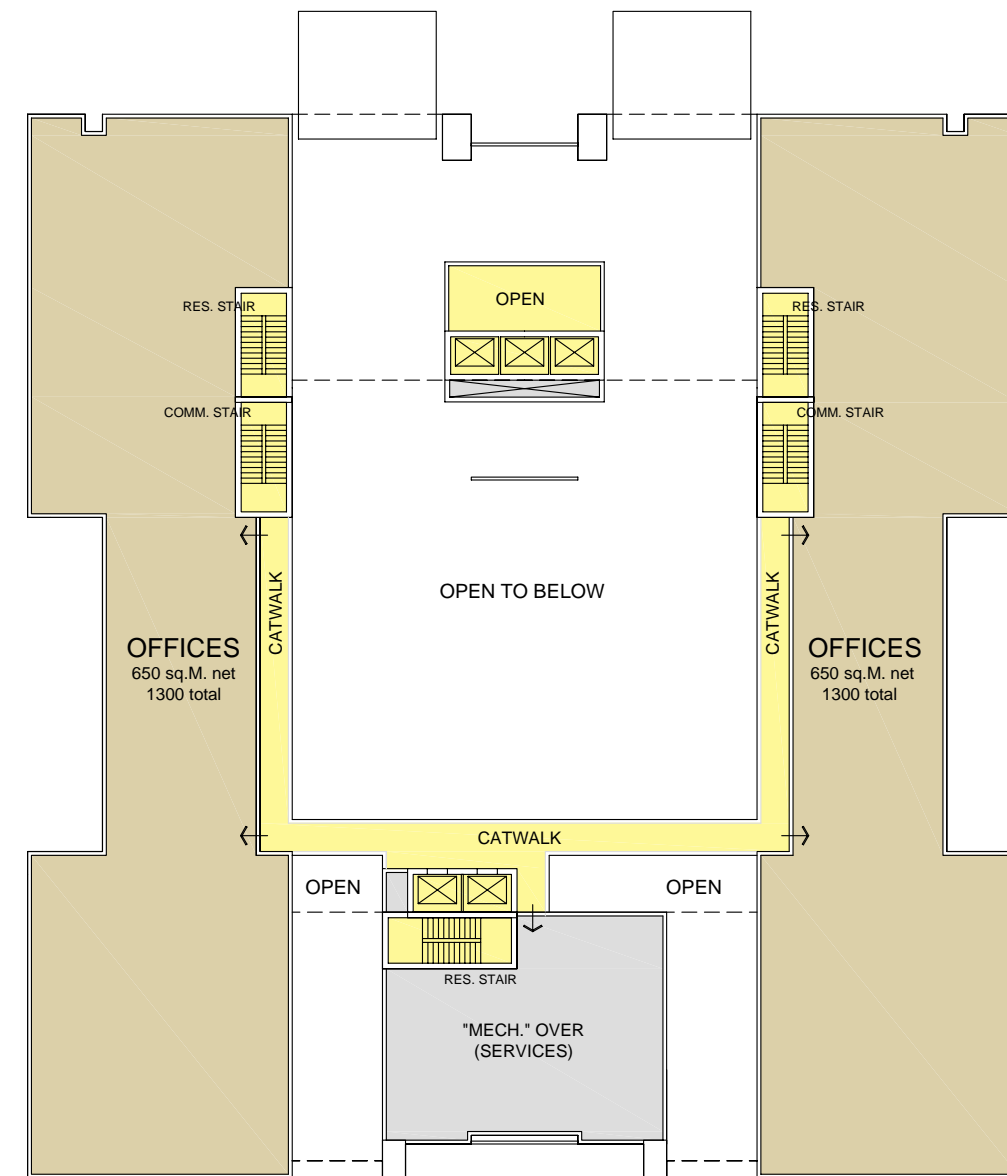
Level G (grade)

1177 sq.M. gross

Commercial / Retail 890 sq.M. net



SCALE 1/400



Level 1

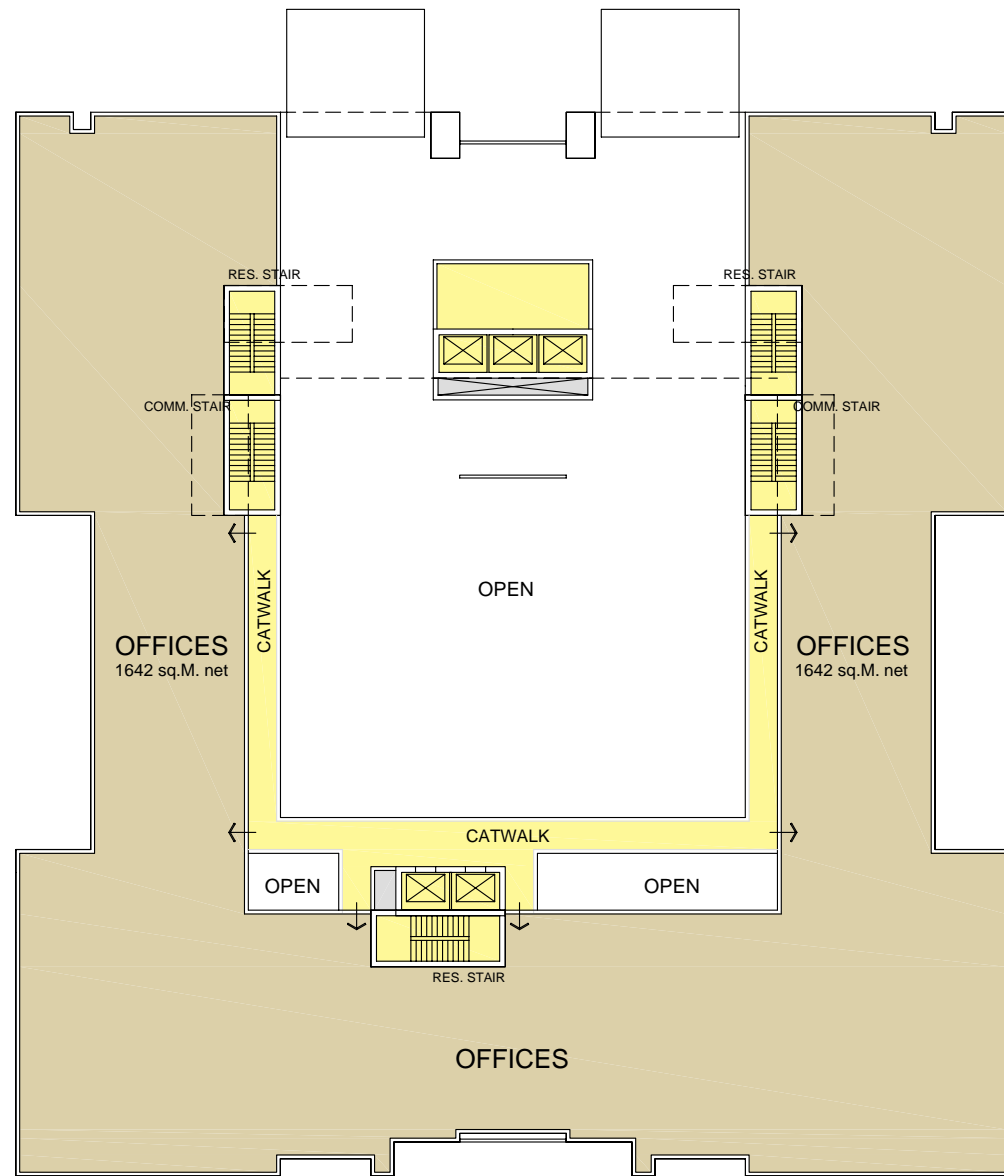
1713 sq.M. gross

Commercial / Offices 1300 sq.M. net

RESIDENTIAL TOWER
GD23
DUBAI, UAE

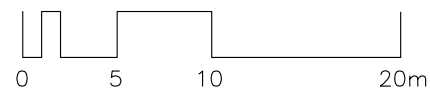
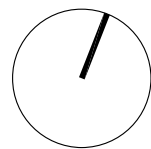
OCTOBER 17, 08



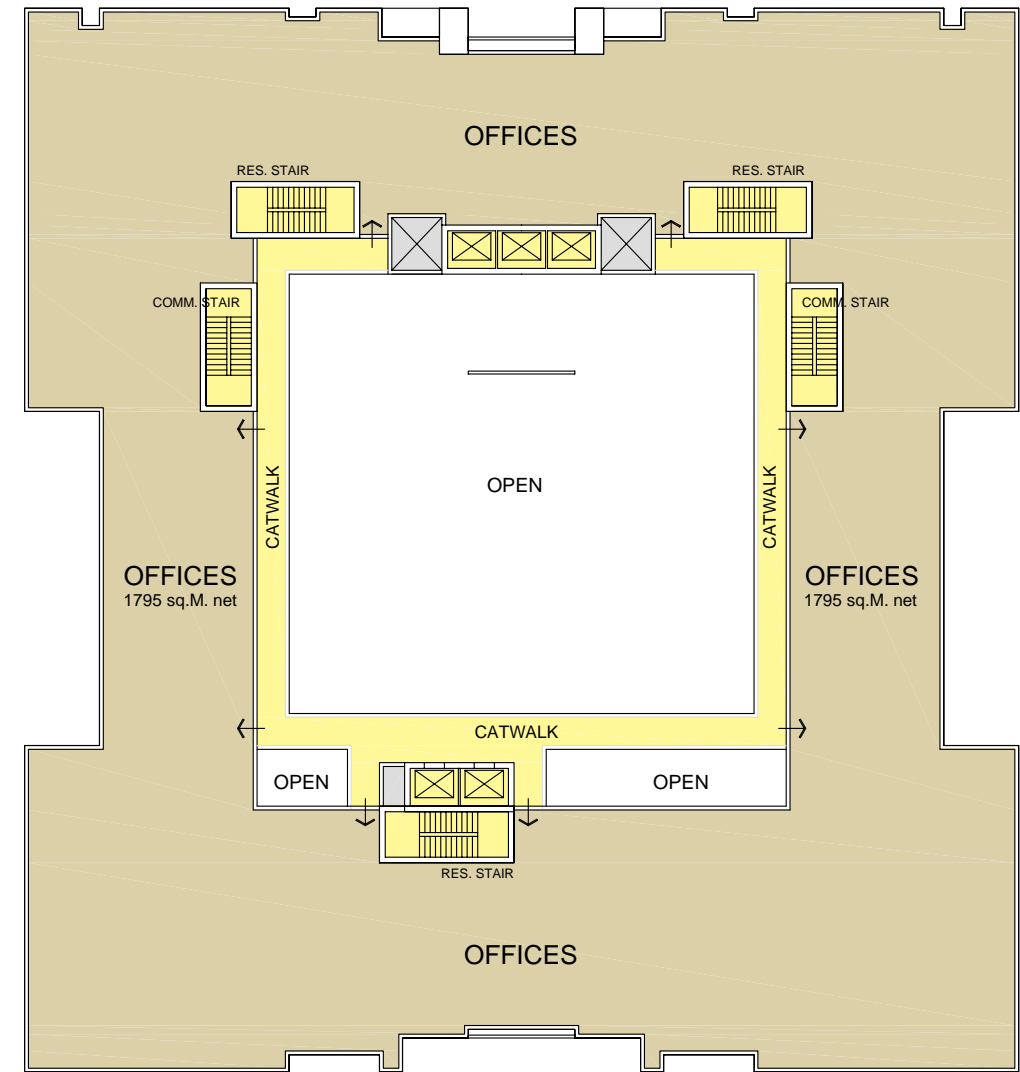


Level 2-3

1824 sq.M. gross
 Commercial / Offices 1642 sq.M. net
 x 2 Levels = 3284



SCALE 1/400



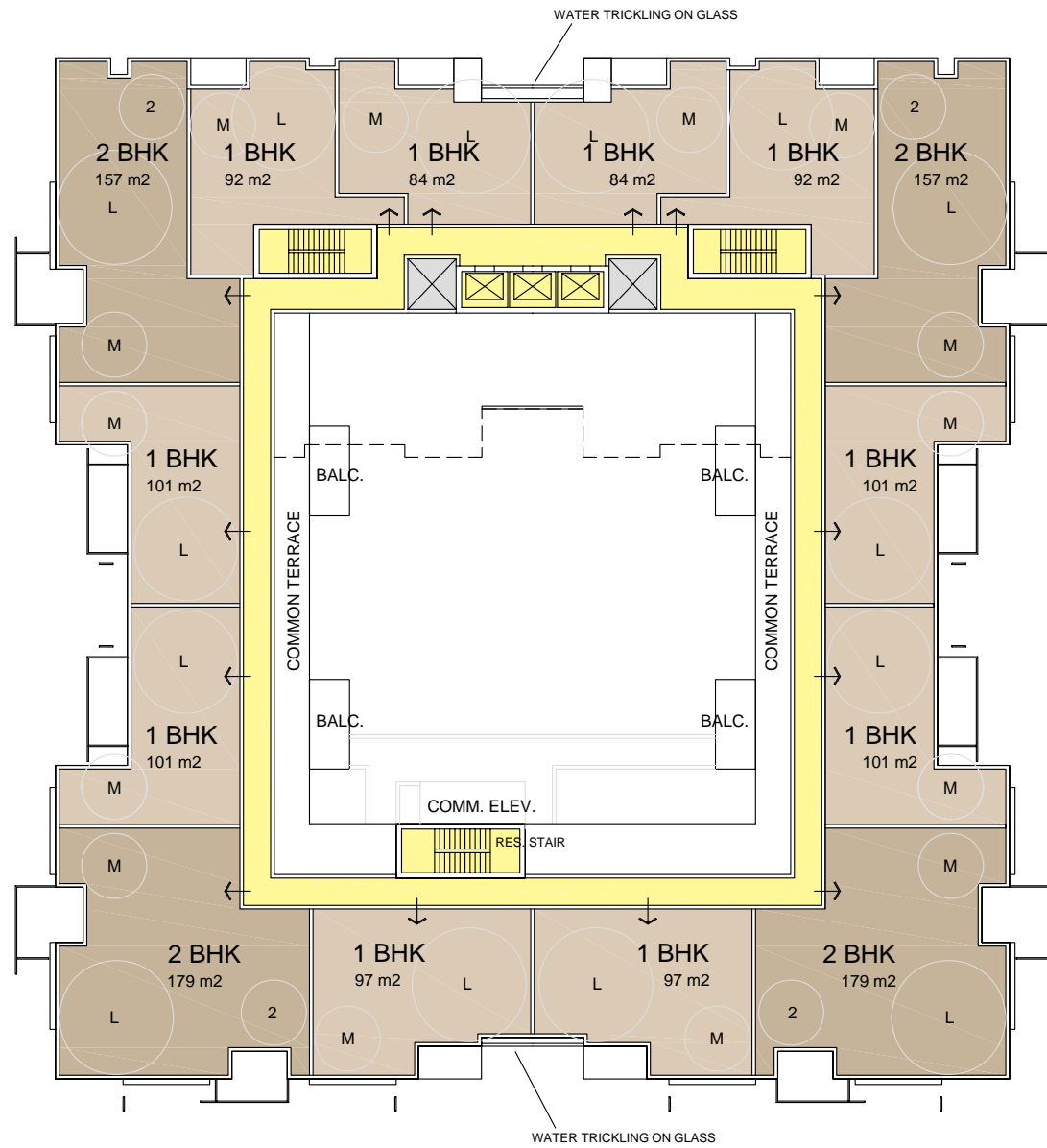
Level 4

2094 sq.M. gross
 Commercial / Offices 1795 sq.M. net

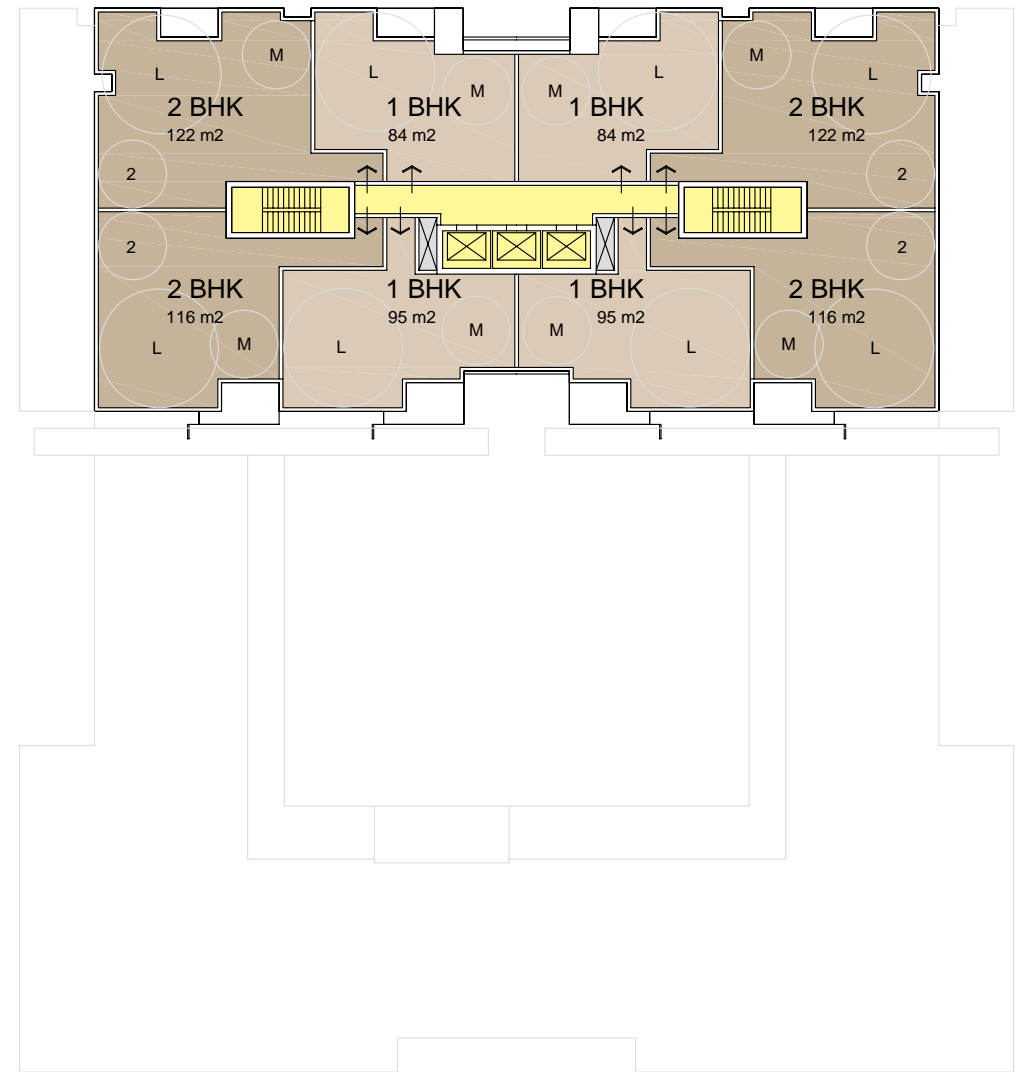
RESIDENTIAL TOWER
 GD23
 DUBAI, UAE

OCTOBER 17, 08

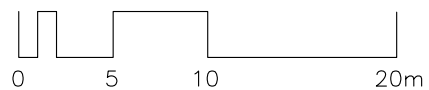
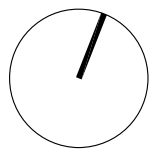




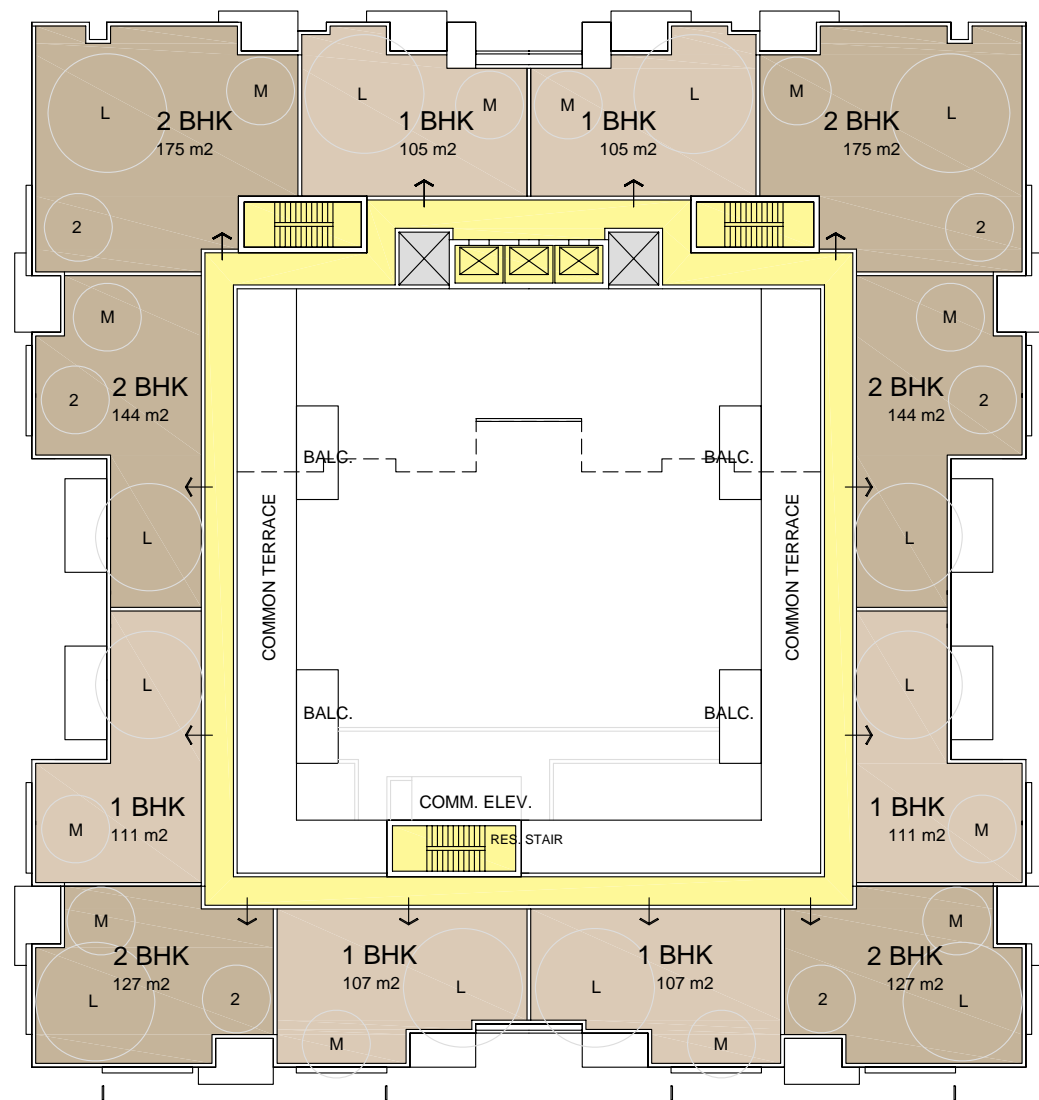
Level 5-6 scheme 1
1968 sq.M. gross



Level 7-24 scheme 1
937 sq.M. gross

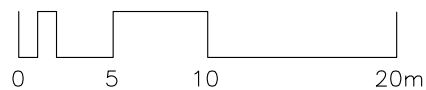
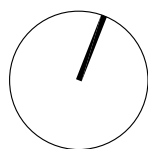


SCALE 1/400

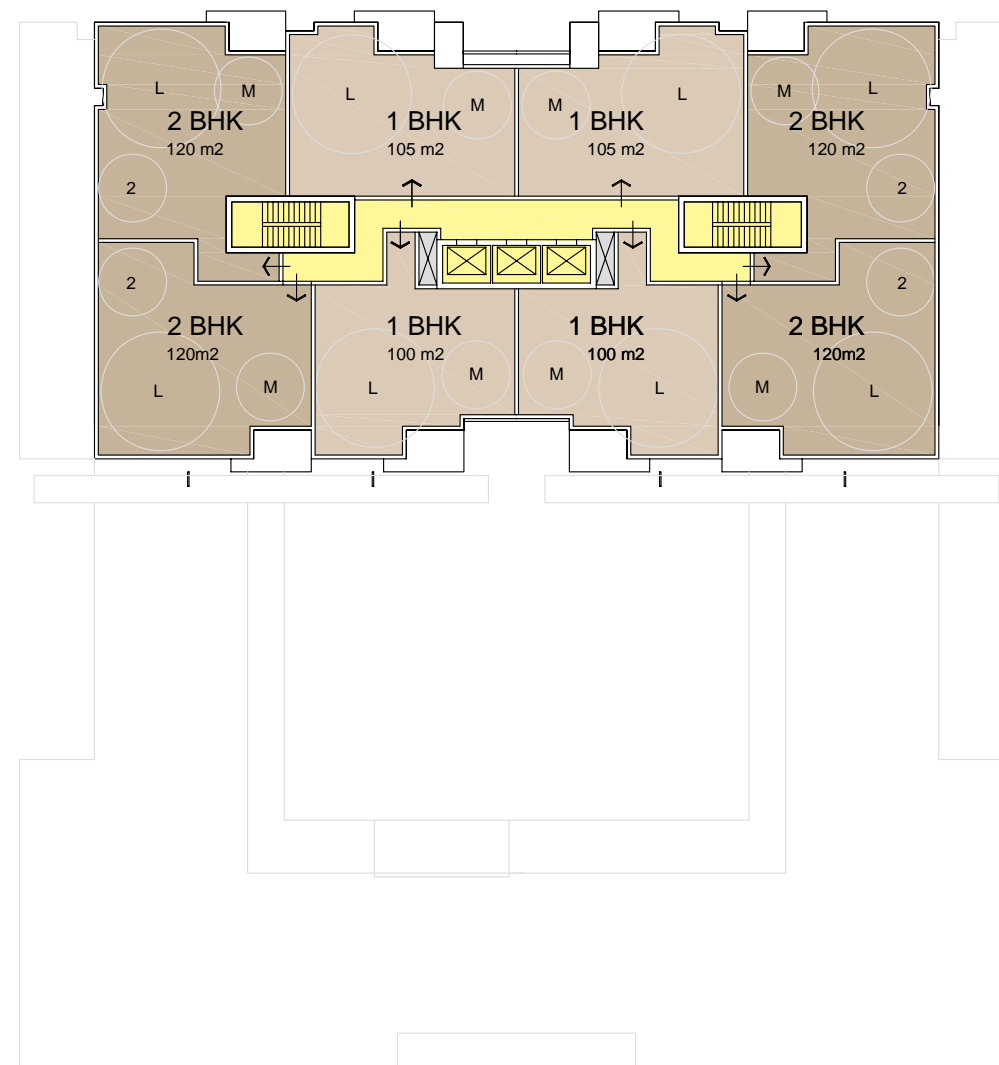


Level 6 scheme 2

1895 sq.M. gross



SCALE 1/400



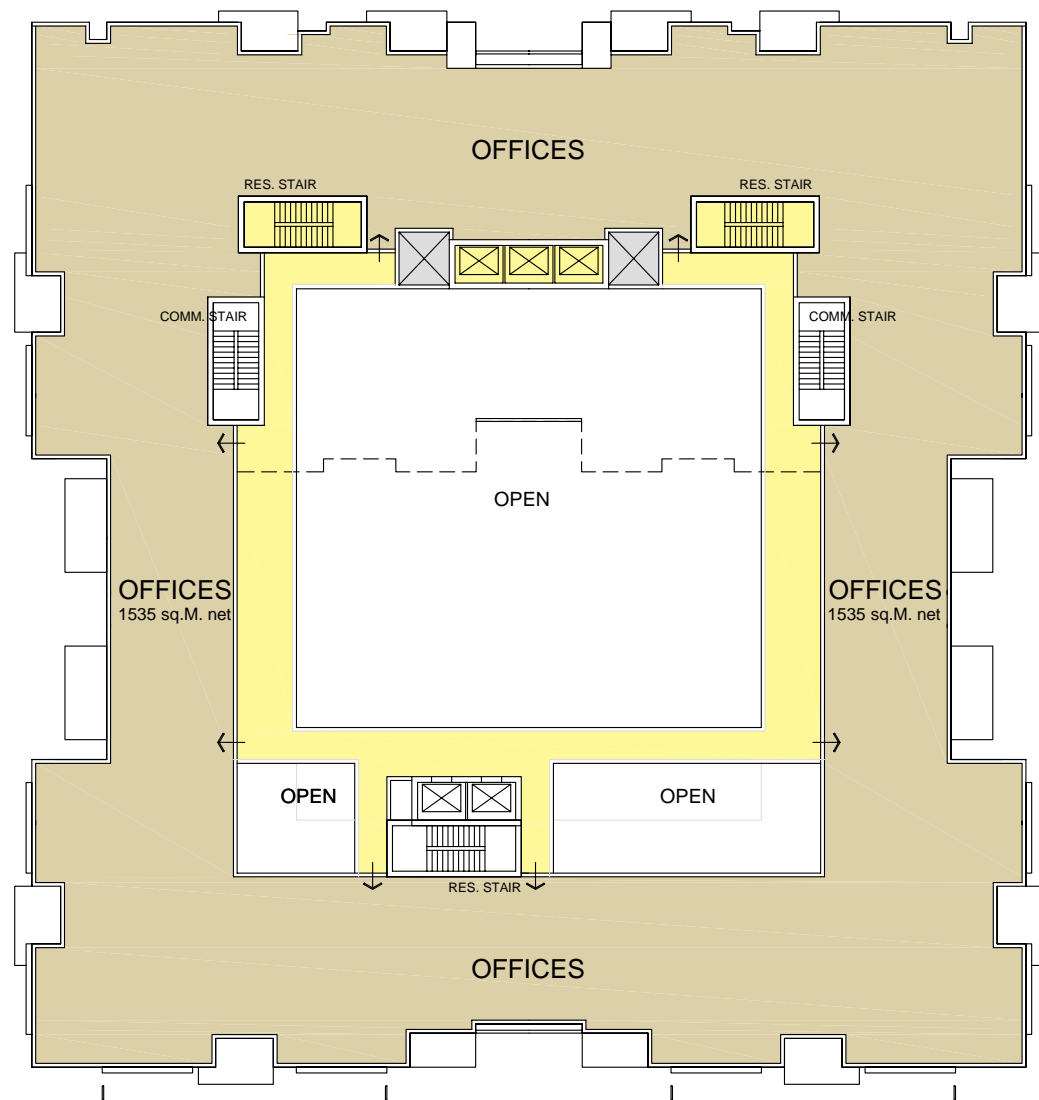
Level 7-24 scheme 2

1027 sq.M. gross

RESIDENTIAL TOWER
GD23
DUBAI, UAE

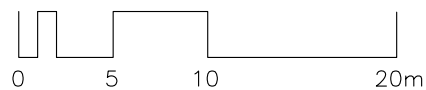
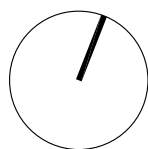
OCTOBER 17, 08





Level 5 scheme 2

2140 sq.M. gross
Commercial / Offices 1535 sq.M. net

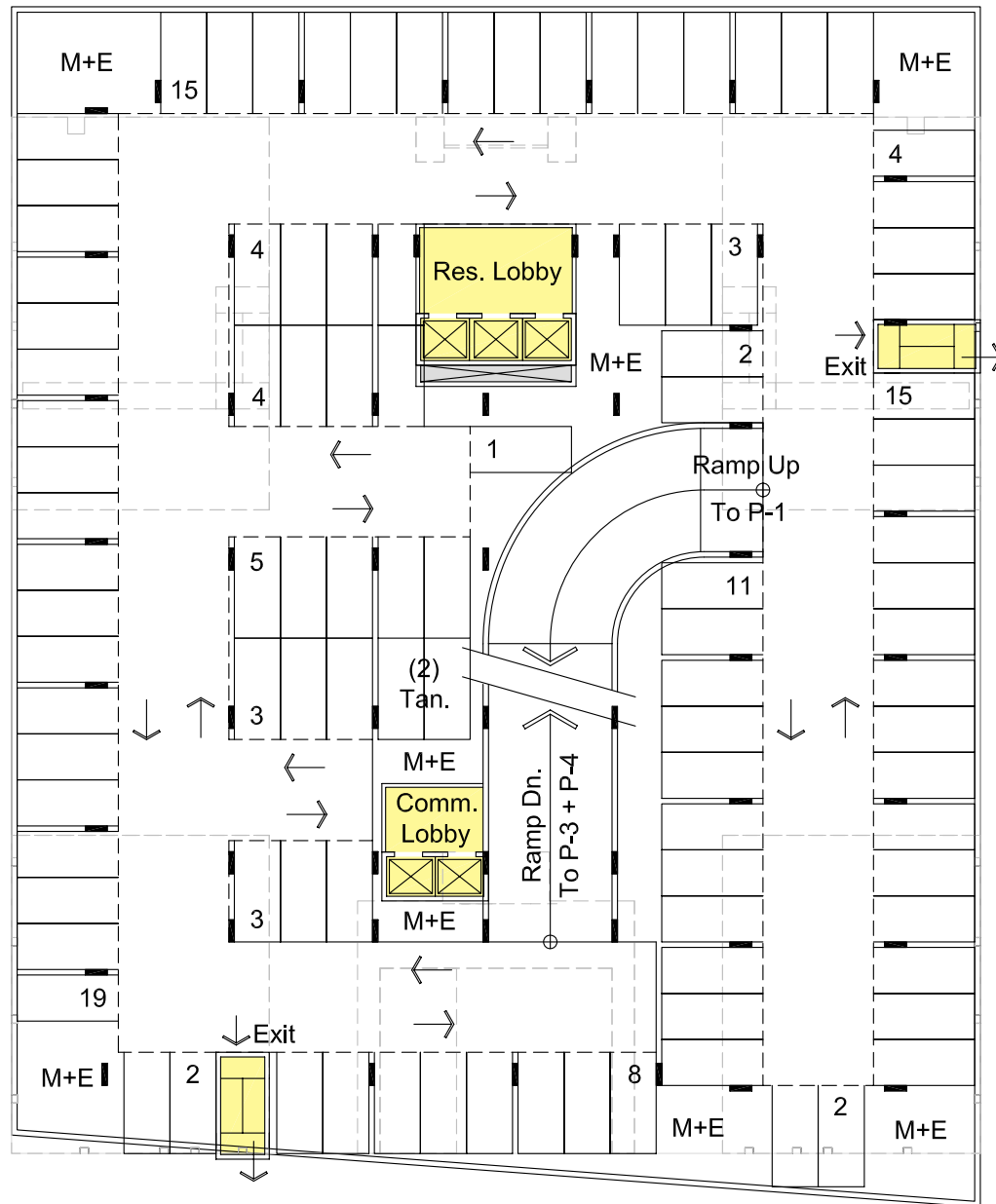


SCALE 1/400

RESIDENTIAL TOWER
GD23
DUBAI, UAE

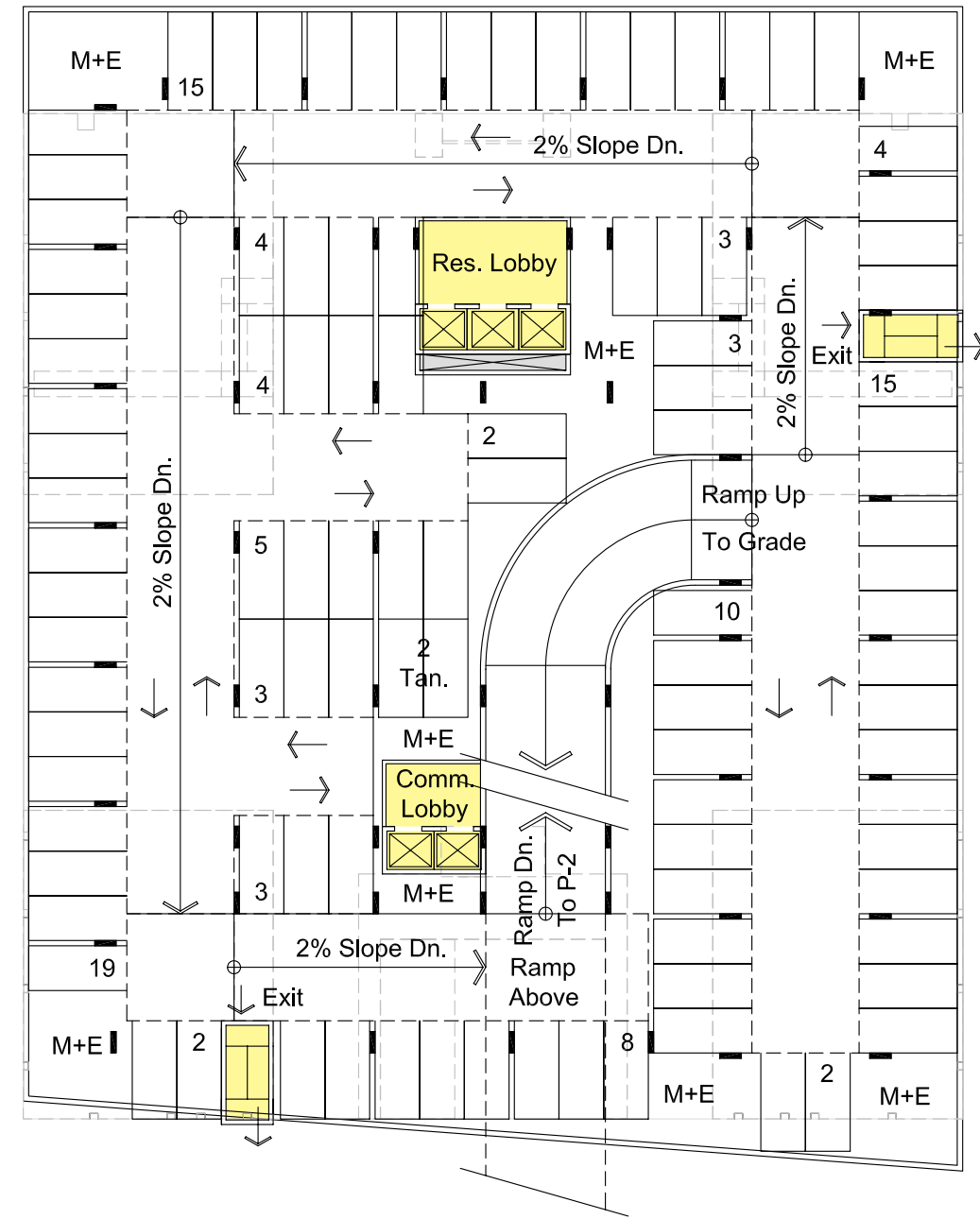
OCTOBER 17, 08





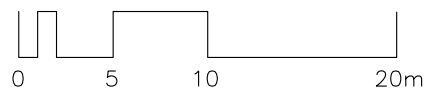
Level P-2 to P-4

P-2 + P-3 101 Stalls / P-4 104 Stalls
 408 Stalls Total (H.C. stalls to be accounted)
 Total Required: 401



Level P-1

102 Stalls
 408 Stalls Total (H.C. stalls to be accounted)
 Total Required: 401



SCALE 1/400

RESIDENTIAL TOWER
 GD23
 DUBAI, UAE

OCTOBER 17, 08



GD-23 G+24 - Preliminary Area Calculations - Scheme 1

LEVEL	AREA (sf)	AREA (m2)	HEIGHT (ft)	HEIGHT (m)	RESIDENTIAL UNITS	1 BHK	2 BHK
24	10,086	937	12	3.65		4	4
23	10,086	937	12	3.65		4	4
22	10,086	937	12	3.65		4	4
21	10,086	937	12	3.65		4	4
20	10,086	937	12	3.65		4	4
19	10,086	937	12	3.65		4	4
18	10,086	937	12	3.65		4	4
17	10,086	937	12	3.65		4	4
16	10,086	937	12	3.65		4	4
15	10,086	937	12	3.65		4	4
14	10,086	937	12	3.65		4	4
13	10,086	937	12	3.65		4	4
12	10,086	937	12	3.65		4	4
11	10,086	937	12	3.65		4	4
10	10,086	937	12	3.65		4	4
9	10,086	937	12	3.65		4	4
8	10,086	937	12	3.65		4	4
7	10,086	937	12	3.65		4	4
6	21,183	1,968	12	3.65		10	4
5	21,183	1,968	12	3.65		10	4
4	22,540	2,094	12	3.65			
3	19,633	1,824	12	3.65			
2	19,633	1,824	12	3.65			
1	18,439	1,713	12	3.65			
G	12,669	1,177	22	6.7			
TOTAL	316,825	29,434	310	94.3		92	80

172 TOTAL

ACTUAL

BUA (m2)	GFA (sf)		GFA (m2)		COVERAGE (%)		PODIUM ENVELOPE HEIGHT (m)	TOWER ENVELOPE HEIGHT (m)	PARKING
	RES	COM	RES	COM	PODIUM	TOWER			
29,434	223,911	92,914	20,802	8,632	63	28	32.5	94.3	408

ALLOWED

BUA (m2)	MAX.GFA (sf)		MAX.GFA (m2)		COVERAGE (%)		MAX. PODIUM ENVELOPE HEIGHT (m)	MAX. TOWER ENVELOPE HEIGHT (m)	PARKING
	RES	COM	RES	COM	PODIUM	TOWER			
30,642	219,885	109,943	20,428	10,214	65	40	32.5	100 (G+24)	385

GD-23 G+24 - Preliminary Area Calculations - Scheme 2

LEVEL	AREA (sf)	AREA (m2)	HEIGHT (ft)	HEIGHT (m)	RESIDENTIAL UNITS	1 BHK	2 BHK	
24	11,055	1,027	12	3.65		4	4	
23	11,055	1,027	12	3.65		4	4	
22	11,055	1,027	12	3.65		4	4	
21	11,055	1,027	12	3.65		4	4	
20	11,055	1,027	12	3.65		4	4	
19	11,055	1,027	12	3.65		4	4	
18	11,055	1,027	12	3.65		4	4	
17	11,055	1,027	12	3.65		4	4	
16	11,055	1,027	12	3.65		4	4	
15	11,055	1,027	12	3.65		4	4	
14	11,055	1,027	12	3.65		4	4	
13	11,055	1,027	12	3.65		4	4	
12	11,055	1,027	12	3.65		4	4	
11	11,055	1,027	12	3.65		4	4	
10	11,055	1,027	12	3.65		4	4	
9	11,055	1,027	12	3.65		4	4	
8	11,055	1,027	12	3.65		4	4	
7	11,055	1,027	12	3.65		4	4	
6	20,398	1,895	12	3.65		6	6	
5	23,035	2,140	12	3.65				
4	22,540	2,094	12	3.65				
3	19,633	1,824	12	3.65				
2	19,633	1,824	12	3.65				
1	18,439	1,713	12	3.65				
G	12,669	1,177	22	6.7				
TOTAL	335,328	31,153	310	94.3		78	78	156 TOTAL

ACTUAL

BUA (m2)	GFA (sf)		GFA (m2)		COVERAGE (%)		PODIUM ENVELOPE HEIGHT (m)	TOWER ENVELOPE HEIGHT (m)	PARKING
	RES	COM	RES	COM	PODIUM	TOWER			
31,153	219,379	115,949	20,381	10,772	63	31	32.5	94.3	408

ALLOWED

BUA (m2)	MAX.GFA (sf)		MAX.GFA (m2)		COVERAGE (%)		MAX. PODIUM ENVELOPE HEIGHT (m)	MAX. TOWER ENVELOPE HEIGHT (m)	PARKING
	RES	COM	RES	COM	PODIUM	TOWER			
30,642	219,885	109,943	20,428	10,214	65	40	32.5	100 (G+24)	385

PARKING CALCULATIONS

SCHEME – 1

Required:
Level-G Retail 890 sq.M. net less 10% (back of house) = 801 @ 1 stall / 25 sq.M. (sales area) = 32 stalls
L-2 to L-4 Commercial 6379 sq.M. net @ 1 stall / 50 sq.M. = 128 + 10% visitor = 13 = 141 stalls
L-5 to L-25 Residential 1-BHK – 88 total @ 1.0 stall / unit = 88 + 2-BHK – 80 @ 1.5 stall / unit = 120 = 208 stalls

Total Required = 381

Provided:
P-1 86 x 1 floor = 86
P-2 to P-3 87 x 2 floors = 174
P-4 90 x 1 floor = 90

Total Provided = 350

SCHEME – 2

Required:
Level-G Retail 890 sq.M. net less 10% (back of house) = 801 @ 1 stall / 25 sq.M. (sales area) = 32 stalls
L-2 to L-5 Commercial 7945 sq.M. net @ 1 stall / 50 sq.M. = 159 + 10% visitor = 16 = 175 stalls
L-6 to L-25 Residential 1-BHK – 80 total @ 1.0 stall / unit = 80 + 2-BHK – 76 @ 1.5 stall / unit = 114 = 194 stalls

Total Required = 401

Provided:
P-1 102 x 1 floor = 102
P-2 to P-3 101 x 2 floors = 202
P-4 104 x 1 floor = 104

Total Provided = 408